

RENAULT LAGUNA



DRIVE THE CHANGE



THE RENAULT CUSTOMER CARE PACKAGE: YET ANOTHER ONE OF THE PLEASURES OF RENAULT OWNERSHIP

Today's Renault cars testify to the enormous technological advances made over the past decade and demonstrate the benefits which those advances have brought to the motorist. The modern Renault performs more strongly, uses less fuel and is safer than ever before. Equally importantly, it is unprecedentedly durable and reliable - a fact which is reflected in the remarkable warranty package enjoyed by every Renault owner. All Renault vehicles come with 3 year warranty and AA Roadside Assist. Paintwork is also guaranteed for 3 years while the anticorrosion warranty runs for 12 year. -In the case of your new Laguna, this warranty package is extended up to 5 years and unlimited mileage*.

A COMPREHENSIVE RANGE OF PRACTICAL, HELPFUL SERVICES

Renault Roadside Assistance. The support you get in the first 3 years of owning your new Renault is enhanced by free Renault Assistance cover provided by the AA. The Renault Assistance team is there for the sole purpose of responding to emergency calls from Renault customers, so you can be assured of top class service. Your handbook will give a complete rundown of all the help and services available to you, but, briefly, they include: Roadside Assistance: if you breakdown or your car is immobilised, at any time of day or night, one free phone call will bring help. Phone 1800 607 607. Recovery: if your car can't be fixed by the side of the road, the AA will transport your vehicle to the nearest Renault dealer and offer you and your passengers an alternative form of mobility. At home: you don't have to be out and about to get help, the AA will attend a breakdown at your home or office as well.

SERVICES AVAILABLE FROM YOUR RENAULT DEALERSHIP

Superior cars - superior service. Renault is represented by a nationwide network of dealers, so you can be sure that you're never far from a group of experts who can help you get the very most from ownership of your new car. Renault workshops are equipped with the very latest in diagnostic and other equipment to keep your car operating at peak efficiency. Your dealer's parts department houses a huge range of electrical and mechanical parts, so repair or servicing operations are hardly ever delayed by the lack of vital parts. Your local dealer is the first point of contact for anything and everything concerned with your new Renault - including, of course, a test drive!

The best accessory shop in town is at your Renault dealer. If you've looked at the specification lists in this brochure, you won't need to be told that Renault cars are amazingly well equipped. But Renault owners are individuals with their own individual tastes, needs and interests. Which is why the Renault Boutique at Renault dealerships offers an enormous range of additional equipment and accessories. There are alloy wheels; body kits; carpet mats; sun blinds; ski and bike carriers; tow bars; child safety seats; alarm systems; in-car entertainment; integrated mobile phone system and much more besides. Every single item is made to the same quality standards as the components used in Renault cars themselves and is a perfect match for Renault's distinctive visual style.

FINANCE AVAILABLE FROM RENAULT

Renault Finance has arrived, offering a full range of financial services that will enable you to purchase and protect the Renault of your choice. We offer competitive and flexible finance packages aimed at you, the Renault customer. We are part of one of Europe's largest motor finance companies and service millions of customers everyday. Drop down to your local dealer today to find out more about our latest offers or visit www.renault.ie

WHO BETTER THAN RENAULT TO SERVICE YOUR RENAULT?

CUSTOMER RELATIONS SERVICES

Renault knows the value of communicating with its customers and we have established effective ways of keeping in touch with you. Whatever your query you can contact Renault Ireland Customer Services Department on LoCall **1890 771 771**

You can also visit us on the Internet at www.renault.ie and on www.facebook.com/renaultireland

Or write to us at:

**Renault Ireland,
Customer Services Department,
Dundrum Retail & Office Park,
Level 6, Block 4,
Dundrum, Dublin 16**



Official Sponsor of 2012 Irish Paralympic Team
Driving Success Towards London 2012 Paralympic Games

* 5 years / unlimited mileage package available. Please ask for more details in your local dealership.



**FOR 113 YEARS,
WE HAVE ALWAYS
COMMUNICATED THE VIEW
THAT FOR A VEHICLE TO BE IN
TUNE WITH THE TIMES, IT HAS
TO BE INNOVATIVE, MAKE
A RESPONSIBLE COMMITMENT
AND INSPIRE PASSION WHILE
OFFERING SUSTAINABLE
MOBILITY FOR ALL.**



Our relationship with drivers and their passengers is founded on one simple idea: for a car to be popular, it has to be practical, reliable and suited to the lifestyle and expectations of each individual. This is why Renault offers general models, - cars for living -, accessible for everyone. From the first standardised models in the beginning of the 20th century, to the upcoming launch of the first range of electric vehicles*, our aim has always been to make the motor car and mobility available to as many people as possible. Today, we are convinced that another world is possible; a world where the automobile is no longer a threat to the environment but instead combines mobility, safety and quality - for everyone. We assert this vision every day, never losing sight of the fact that passion for motoring is, and will always be, what drives us forward. We want to bring new meaning to the automobile, so that it can take a different, more appropriate position with regard to social issues and so that it will always remain a sign of progress for Mankind. The Renault vehicles for today and for the future are the founding stones of our ambition to offer sustainable mobility to all.

* Zero CO₂ emissions during use, excluding wearing parts.



RENAULT. DRIVE THE CHANGE.



RENAULT LAGUNA

**...IT TURNS THE CORNER,
IT TURNS HEADS. AND TAKES
YOU BY COMPLETE SURPRISE.
LAGUNA BRINGS YOU STATE OF
THE ART TECHNOLOGY, SAFETY
SYSTEMS AND EFFICIENT ENGINES.
IT'S MORE THAN A MEETING OF MINDS.
IT'S A REVELATION.**





ITS PROTECTIVE INSTINCTS.
YOUR SAFETY.
BOTH ARE PRIORITIES.



More than ever, you want to have complete trust in your car. As always, Renault offers you outstanding safety with the Laguna, as proven by the most rigorous of tests. The Laguna benefits from tried and tested technologies such as electronic stability control (ESC), ABS and EBD (Electronic Brake Distribution) and Brake Assist. And above all, the Laguna is innovative on more than one count. It gives you increased passive safety with its full set of New Generation auto-adaptive airbags and, in particular, improved lateral safety thanks to a new system of sensors in the doors. You're in safe hands with the Laguna. From every point of view.

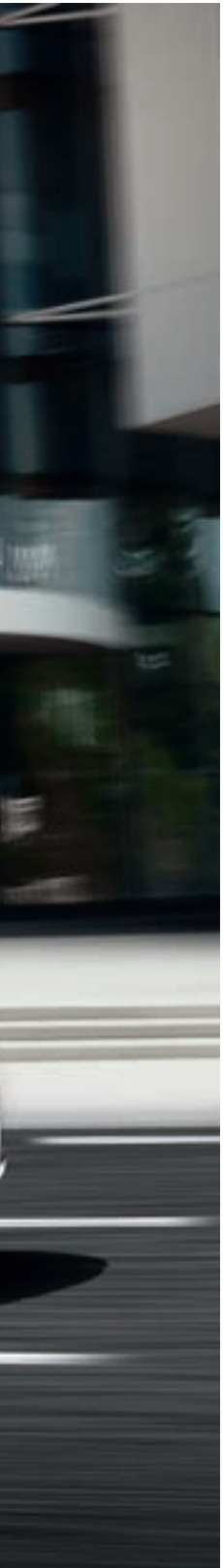
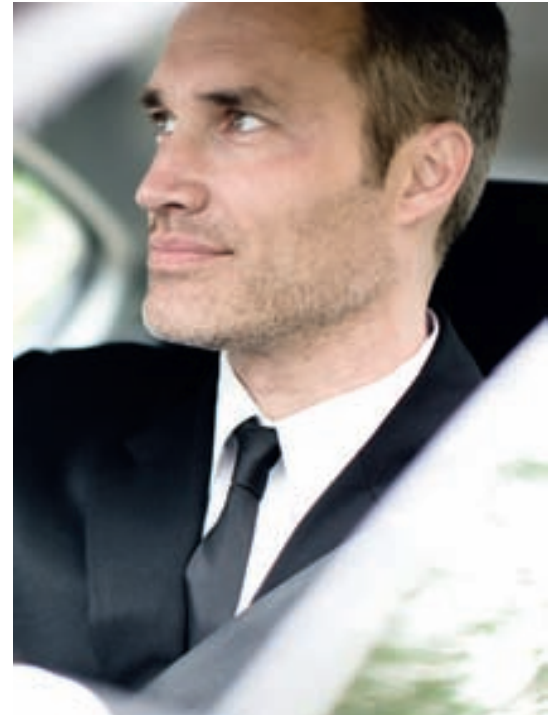




CAPTIVATING DESIGN

DISCOVER NEW SENSATIONS

The Laguna is changing. With its dynamic grille and headlights, the Laguna exhibits a fiery temperament. Its sporty lines enhance its strength and character. The Laguna's headlights and the chrome twin exhaust are the trademarks of its sleek style. Fitted with generous alloy wheel rims, the Laguna entices you to discover new sensations. Its high-performance and ecological (from tax band A) dCi engines bear this out, right from the off! Comfort, flexibility, agility and extreme responsiveness in all circumstances: The Laguna is as one with the road and you are as one with the Laguna.



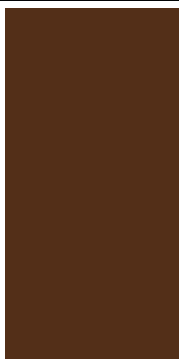


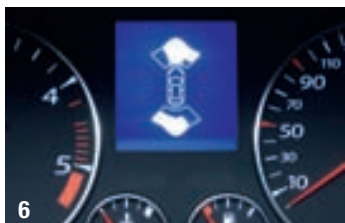
INTUITIVE TECHNOLOGY

FIND PERFECT HARMONY

On board the Laguna, technology, pleasure and comfort become one. The car is opened and the engine started via a hands-free card. When you approach the car, the doors unlock.... when you get out, they lock again! The electric parking brake also activates and deactivates automatically. The intuitive joystick is used to control the Carminat TomTom® Live navigation system. Offered as an exclusive feature, this system is particularly easy to use and combines a full range of functions : detailed, accurate maps displayed on a large screen (5.8"), points of interest and easy updates using the TomTom® Home application. For music lovers, Laguna offers the 3D Arkamys sound system or the world famous Bose® sound system, providing all the passion of a live audio performance. Thanks to an in-depth study of the acoustic environment inside the passenger compartment and to Bose®'s know-how, all passengers enjoy realistic, high-quality sound. By placing these accessory tasks in the hands of technology, the Laguna allows the driver to focus on what's most important: driving pleasure.

Equipments above depend on versions





1. AIR-CONDITIONING

The dual-zone air-conditioning with climate control and automatic recycling via a toxicity sensor lets the front-seat passengers select the exact temperature that suits them.

2. USB CONNECTION

Connect your digital music player via the USB and iPod® sockets and control the system using the steering wheel controls.

3. SUNROOF

A sunroof with two anti-UV glazed panels, one of which opens to 4 different positions and the other fixed, provides exceptional light levels inside the vehicle.

4. ELECTRIC PARKING BRAKE

When the engine is switched off, the system automatically applies the handbrake.

5. BOSE® SOUND SYSTEM

Thanks to an in-depth study of the acoustic environment inside the passenger compartment and to Bose®'s know-how, all passengers enjoy realistic, high-quality sound, as if they were in a concert hall.

6. FRONT AND REAR PARKING DISTANCE CONTROL

To make parking easier, the parking distance control system warns you of any obstacles in front or behind with an audible signal (a sequence of beeps that get quicker the closer you get) and a visual signal (on the LCD screen).

1. ASR

Active traction control system, the ASR makes starting easier in all low-grip conditions.

2. ESP DYNAMIC DRIVING CONTROL

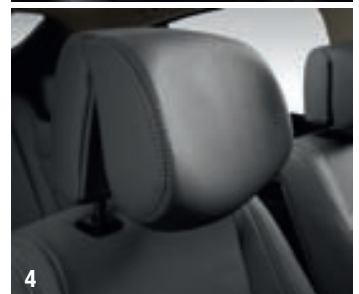
With ASR traction control and understeer control logic (UCL): vehicle stability is guaranteed in difficult road conditions.

3. ISOFIX SYSTEM

The rear side seats are equipped with the ISOFIX attachment system to install one or two child car seats safely.

4. ANTI-WHIPLASH FRONT HEADRESTS

These can be adjusted both in height and inclination to prevent the risk of whiplash injury.



STORAGE AREAS



1. CLOSED STORAGE AREA

Located to the right of the steering wheel, this storage area lets the driver keep small items within arm's reach.



2. CENTRE CONSOLE STORAGE AREA

A practical and easy-to-access storage area for the front passengers.



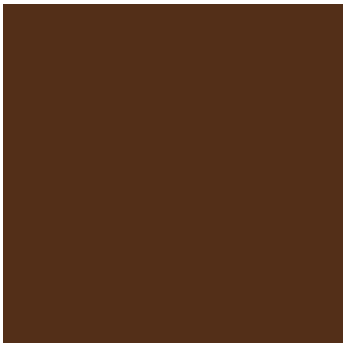
3. MAP POCKETS

Located on the backs of the front seats, these pockets can be used to store documents, books and magazines.



4. STORAGE NET ON CENTRE CONSOLE

Practical and discreet, the storage net can be used to tidy away all kinds of documents and books.



MODULAR LAYOUT

1. STORAGE COMPARTMENTS

Allows you to store your belongings securely.

2-3-4. MODULAR LAYOUT (SPORT TOURER ONLY)

Simply click on the handles that can be accessed via the boot or the rear seats, and the seats fold down in thirds (1/3 or 2/3) or completely, to create a maximum loading space with a flat floor.

5. LUGGAGE SPACE COVER (SPORT TOURER ONLY)

It retracts semi-automatically simply by pressing on it.

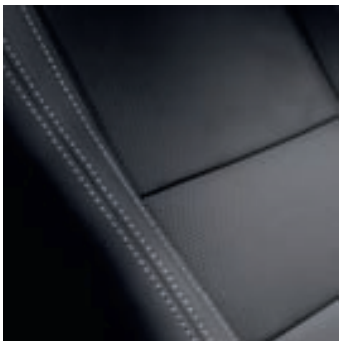


ENVIRONMENTS



EXPRESSION

The Laguna Expression, fitted with dark grey upholstery with leather type inserts and grey contrast stitching, offers the Arkamys CD radio sound system, the Bluetooth® hands-free telephone system and air-conditioning as standard. For "made-to-measure" comfort, the driver's seat and headrest have several settings.



DYNAMIQUE

A modern and sporty elegance with dark grey upholstery with leather type inserts and contrast stitching, brightens up the design of your Laguna. Premium instrument panel with chrome surround on instrument clusters, dual-zone climate control and electronic parking brake as standard.

ENVIRONMENTS



INITIALE

Perforated leather - leather type* upholstery with electric and heated front seats, dashboard with grey contrast stitching... the most luxurious Laguna version. Elegance which goes together with high-precision technology, designed to simplify your driving with the Carminat TomTom® LIVE navigation system, the Bluetooth® hands-free telephone system and the Bose® sound system.

* Bovine source leather



EQUIPMENT

<p>Main standard equipment 5 Years warranty / Unlimited mileage Electronic Stability Control (ESP) "3D Sound by Arkamys" Radio-CD MP3, RCA socket Bluetooth handsfree phone kit Air conditioning Cruise control with speed limiter Front airbags, front side airbags and front & rear curtain airbags Electric, body coloured door mirrors Central storage unit with arm-rest 16" wheel trims</p>	<p>Height adjustable front seats Renault Key Card with remote Deadlocking Privacy glass on rear windows Leather steering wheel Front fog light Normal size temporary spare wheel* or tyre repair kit 3 rear headrest Tinted windscreen Smoker kit Dark grey cloth upholstery</p>	<p>Options Rear proximity sensors 16" alloy wheels Metallic paint</p> <p style="text-align: right;">EXPRESSION</p>
<p>Main standard equipment = Expression + Dual-zone climate control (driver and front passenger) Automatic headlights (dusk sensor) Automatic front windscreen wipers (rain sensor) 16" alloy wheels Electric parking brake</p>	<p>Rear proximity sensors Illuminated front sunvisors Rear electric windows with anti-pinch control Electrochrome rear view mirrors</p>	<p>Options Electric panoramic sunroof 17" alloy wheels Carminat TomTom® integrated navigation system Heated, electric leather seats Metallic paint</p> <p style="text-align: right;">DYNAMIQUE</p>
<p>Main standard equipment = Dynamique + Full beige leather/leather type seats (dark grey optional) Bose® Sound System, Single CD MP3, 10 speakers Heated, electric front seats Carminat TomTom® LIVE integrated navigation system 17" alloy wheels</p>	<p>Hands-free Renault Key Card Chrome inserts on dashboard and central console Front and rear parking sensors Rear sunblinds Floor mats Electric door mirrors with memory settings</p>	<p>Options Electric panoramic sunroof 18" alloy wheel Metallic paint</p> <p style="text-align: right;">INITIALE</p>

* Depending on availability. Please check with your local dealer.

RENAULT Finance

Have you found the car that would best suit your needs? **RENAULT** Finance will help you to drive away with it!

At **RENAULT** Finance, we pride ourselves on being:

- **Flexible.** We have flexible payment plans. We can tailor the term, the deposit or the repayment to meet your needs.
- **Competitive.** We offer competitive rates and attractive financial packages you will not find anywhere else.
- **Simple.** We provide an easy application process, quick decision and minimum paperwork, all at your Local Dealer.
- **Creditable.** We are part of one of Europe's largest motor finance companies and offers financial services to millions of customers everyday.

Renault Finance is a trading name of RCI Banque Branch Ireland, a wholly owned subsidiary of the Renault Group. RCI Banque is regulated by the French banking authority and is supervised by the Central Bank of Ireland for conduct of business purposes.

ACCESSORIES



1. TRANSVERSE BARS ON LONGITUDINAL BARS

These bars are attached to the longitudinal bars of the Laguna Sport Tourer. They can take one luggage box or several pairs of skis.



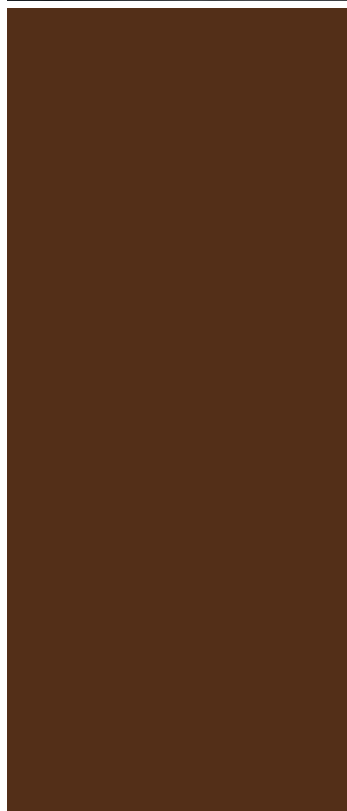
2. BOOT FIN

Specially created with Renault Design to enhance the dynamic personality of the Laguna Hatch.



3. CARPETS

Made to measure and 100% compatible with the original specifications, Renault carpets integrate harmoniously with the interior of your car and provide a high level of quality and safety. The protective carpet mats (fabric or rubber) integrate perfectly into your vehicle's interior.



4. WRAP-AROUND NETTING

This netting provides an extra storage area in the boot and ensures that small objects are secured thanks to its 3 compartments.



5. COMPARTMENTALISED BOOT CONTAINER

The container offers several different combinations so that all items can find their own natural place in separate compartments. It protects the carpet from dirt and damage.



6-7. WHEEL RIMS

Important for aesthetics and safety, Renault brings you a wide range of models to customise your vehicle.



6



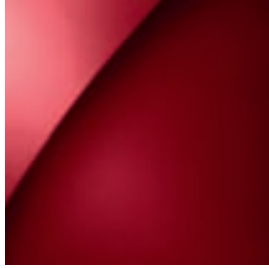
7



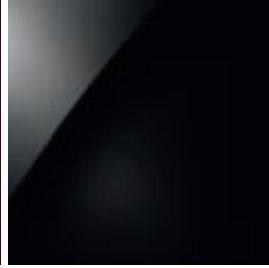
COLOURS



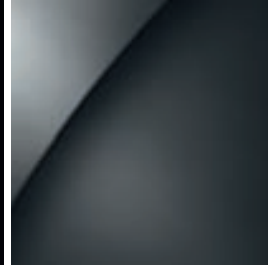
369 S/O GLACIER WHITE (NM)



NND INTENSE RED (MP)



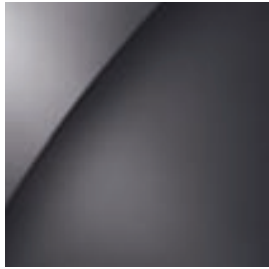
676 BLACK (MP)



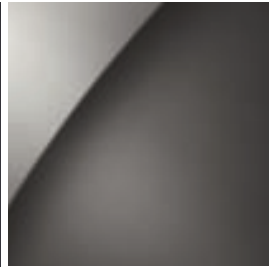
B66 ECLIPSE GREY (MP)



D69 PLATINUM (MP)



KNG GREY SILVER (MP)



HNK ASH GREY (MP)

MP: Metallic Paint, NM: Non-Metallic Paint, S/O: Special Order

From time to time, changes are made to the colour range above without prior notice. Please check availability with your Renault Dealer.

WHEELS



16" BAYADÈRE WHEEL RIMS



BROADWAY 16"





LONGBEACH 17"



CELSIUM 18"




TECHNICAL SPECIFICATIONS

		 1.5 dCi 110	 2.0 dCi 150	2.0 dCi 175
LAGUNA ENGINES				
Gear type		6-speed manual	6-speed manual	6-speed automatic
Engine emission standard		Euro 5	Euro 5	Euro 5
ENGINES				
Capacity in cm ³		1,461	1,995	1,995
Bore x stroke (mm)		76 x 80.5	84 x 90	84 x 90
Max. power in hp (engine speed in rpm)		110 (4,000)	150 (4,000)	175 (3,750)
Max. torque in Nm (engine speed in rpm)		240 (1,750)	340 (2,000)	360 (2,000)
Injection type		Common Rail direct injection diesel 1,600 bars		
PERFORMANCE				
Top speed (km/h)	Hatch / Sport Tourer	192	210/210	220/215
0-100 km/h (s)	Hatch / Sport Tourer	11.9	9.5/9.7	9.6/9.8
1,000 m DA (s)	Hatch / Sport Tourer	33.1	30.6/30.9	30.5/30.8
CONSUMPTION IN ACCORDANCE WITH THE LAST AMENDMENT TO THE EUROPEAN DIRECTIVES 80 / 1,268 (IN l/100km AND g/km)				
Fuel tank capacity (l)		60	60	60
CO ₂ emissions (g/km)	Hatch / Sport Tourer	118	136/136	159/159
Urban conditions (l/100km)	Hatch / Sport Tourer	5.8	6.8/6.8	8.0/7.9
Outer-urban conditions (l/100km)	Hatch / Sport Tourer	3.9	4.4/4.4	5.1/5.1
Mixed conditions (l/100km)	Hatch / Sport Tourer	4.6	5.2/5.2	6.0/6.1
BRAKES				
Front : ventilated discs (Ø - thickness in mm)		280 - 24	296 - 26	296 - 26
Rear : plain disks (Ø - thickness in mm)		300 - 11	300 - 11	300 - 11
WHEELS AND TYRES				
Tyre dimensions*		205/55R16 91 H	205/55R16 91 H	205/55R16 91 H
Reference rims*		205/55R16 91 H	6.5 J16	6.5 J16
WEIGHTS (kg) DEPENDING ON VEHICLE EQUIPMENT				
Kerb weight	Hatch / Sport Tourer	1,398	1,492 / 1,509	1,528 / 1,553
Kerb weight on front	Hatch / Sport Tourer	867	940 / 921	1,045 / 975
Kerb weight on rear	Hatch / Sport Tourer	531	552 / 589	613 / 578
Gross vehicle weight (GVW)	Hatch / Sport Tourer	1,936	2,025 / 2,025	2,076 / 2,107
Gross Train Weight (GTW)	Hatch / Sport Tourer	3,236	3,525 / 3,551	3,576 / 3,607
Max. payload (GVW- kerb weight) depending on equipment level	Hatch / Sport Tourer	538	573 / 516	548 / 554
Max. braked trailer		1 500	1 500	1 500
Max. unbraked trailer		650	650	650

* Please note that tyre and rim dimensions may vary depending on trim level
205/50 R 17 89 H if 17" alloys standard.



Renault  for the Laguna meets the following 3 criteria:

-  vehicles produced in an ISO 14001 certified plant minimising the impact on the environment
-  vehicles with CO₂ emissions of less than 120g/km or running on biofuels
-  vehicles using more than 7% recycled plastic and with end-of-life recycling of more than 85%.

With Renault , the manufacturer is committed throughout the life cycle of the vehicle.

DIMENSIONS



RENAULT LAGUNA

Boot volume dm³ 450

Dimensioned drawing (mm)

A - Wheelbase	2,756
B - Overall length	4,695
C - Front overhang	1,014
D - Rear overhang	926
E - Front track	1,557
F - Rear track	1,512
G - Overall width without door mirrors	1,811
G1 - Overall width with door mirrors	2,060
H - Unladen height	1,445
H1 - Unladen height under tailgate	1,900
J - Unladen boot sill height	711
K - Ground clearance (laden)	>120
M - Front elbow room	1,487
M1 - Rear elbow room	1,490
N - Front shoulder width	1,440
N1 - Rear shoulder width	1,400
P - Front headroom at 14°	890
Q - Rear headroom at 14°	842
R - Knee room	220
Y - Upper boot entrance	870
Y1 - Lower boot entrance	910
Y2 - Interior width between wheel arches	1,000
Z1 - Loading length behind bench seat	1,005
Z2 - Loading length with rear seats folded down	1,805
Z3 - Height under shelf	470



RENAULT LAGUNA SPORT TOURER

Boot volume dm³ 508

Dimensioned drawing (mm)

A - Wheelbase	2,756
B - Overall length	4,803
C - Front overhang	1,014
D - Rear overhang	1,031
E - Front track	1,557
F - Rear track	1,512
G - Overall width without door mirrors	1,811
G1 - Overall width with door mirrors	2,060
H - Unladen height	1,445
H1 - Unladen height under tailgate	1,900
J - Unladen boot sill height	546
K - Ground clearance (laden)	>120
M - Front elbow room	1,487
M1 - Rear elbow room	1,490
N - Front shoulder width	1,440
N1 - Rear shoulder width	1,400
P - Front headroom at 14°	890
Q - Rear headroom at 14°	895
R - Knee room	220
Y - Upper boot entrance	890
Y1 - Lower boot entrance	1,030
Y2 - Interior width between wheel arches	1,000
Z1 - Loading length behind bench seat	1,120
Z2 - Loading length with rear seats folded down	1,910
Z3 - Height under shelf	436

EQUIPMENT AND OPTIONS

	Expression	Dynamique	Initiale
ACTIVE / PASSIVE SAFETY and ANTI-THEFT			
6 airbags: adaptive for driver and passenger, side chest-level/pelvis-level in the front, curtain in the front and rear	●	●	●
Automatic lighting of hazard warning lights during emergency braking	●	●	●
ESP dynamic driving control + ABS + EBA (Emergency Brake Assist)	●	●	●
Front seat belts with double-pretensioners and load limiter	●	●	●
Three 3-point rear seat belts with pretensioners and load limiter	●	●	●
Automatic unlocking of opening elements in the event of impact	●	●	●
Manual deactivation of front passenger airbag	●	●	●
ISOFIX child seat mounting points on rear outer seats	●	●	●
Re-inflation kit and storage area in emergency spare wheel compartment	●	●	●
Normal size temporary spare wheel** or tyre repair kit	●	●	●
Rear seat belts buckled/unbuckled indicator	●	●	●
Fuel flap with integrated opening	●	●	●
LIGHTING & VISIBILITY			
Front fog lights	●	●	●
Elliptic halogen headlights	●	●	●
Sun visor with hideaway courtesy mirrors on driver and passenger side / paper container on driver side	-	●	●
Electrochrome rearview mirror	-	●	●
Automatic headlighting and windscreen wipers	●	●	●
See Me Home headlights	●	●	●
Electrically heated and adjustable door mirrors (wide angle on driver's side)	●	●	-
Electrically heated, adjustable and folding door mirrors with memory settings (wide angle on driver's side)	-	-	●
Heated rear window	●	●	●
STORAGE - FUNCTIONAL FEATURES			
Front armrest console with storage compartment under armrest	●	●	●
Full rear central armrest with cup holder	●	●	●
Open compartment in front and rear door panels	●	●	●
Refrigerated glovebox	●	●	●
Smoker kit	●	●	●
Retractable cup holder on dashboard	●	●	●
12V accessory socket at the rear of the centre console	-	●	●
12V accessory socket in the boot	●	●	●
12V accessory socket in storage area under centre console armrest	●	●	●
Glasses holder on driver's side	●	●	●
Closed storage area to the right of the steering wheel	●	●	●
BOOT			
2 bag hooks (Sport Tourer)	●	●	●
4 tie-down rings in the boot	●	●	●
Semi-automatic retractable luggage space cover (Sport Tourer)	●	●	●
"Easy-Break" modular layout: flat floor + "instant" conversion to estate from the boot in one movement (Sport Tourer)	●	●	●
Closed side storage compartment flaps on wheel arches (Sport Tourer)	-	●	●
Open side storage areas (Hatch)	●	●	●
COMFORT			
Rear parking distance control (disconnectable, with visual and audible indicator)	○	●	●
Front and rear parking distance control (disconnectable, with visual and audible indicator)	-	-	●
New generation anti-whiplash front headrests with forward / backward adjustment	-	●	●
Renault remote control card	●	●	-
Renault hands-free access and ignition card	-	-	●
Air-conditioning	●	●	●
Dual-zone air-conditioning with climate control toxicity sensor and 3 circulation settings (Soft / Auto / Fast)	-	●	●
Electronic parking brake	-	●	●
Cruise control / speed limiter (with steering wheel controls)	●	●	●
Front seats with manual height / longitudinal / inclination adjustments	●	●	-
Electrically adjustable front seats, with memory on driver side	-	-	●
Heated front seats (heat adjustable)	-	○	●
Driver's seat with manual lumbar adjustment	●	●	●
Sunblinds on rear side windows (+ rear window on Hatch)	-	-	●
Electric panoramic sunroof (with blackout curtains)	-	○	○
Height- and depth-adjustable steering wheel	●	●	●

	Expression	Dynamique	Initiale
AUDIO COMMUNICATION NAVIGATION			
Audio line-in on centre console (RCA socket for portable music player)	●	●	-
Single-CD radio with MP3 player, with "3D Sound by Arkamys", double aerial, Bluetooth® connectivity, 8 speakers and steering wheel controls	●	●	-
10-speaker Bose® Sound System, single-CD radio with MP3 player, double aerial, Bluetooth® connectivity, steering wheel controls and digital amplifier	-	-	●
Carminat TomTom® Live, GPS navigation with Republic of Ireland and UK maps and colour screen, access to Live connected services, joystick control on centre console	-	○	●
Bluetooth® hands-free telephone system	●	●	●
EXTERIOR APPEARANCE			
Body-coloured side protective strips and door handles	●	●	●
Satin aluminium longitudinal roof bars (Sport Tourer)	●	●	●
Body-coloured bumpers, glossy black grille, chrome borders on the front	●	●	●
Chrome window surrounds	●	●	●
Body-coloured door mirror shells	●	●	●
LED rear lights (Hatch)	●	●	●
16" wheel trim level	●	-	-
16" alloy wheels	○	●	-
17" alloy wheels	-	○	●
18" alloy wheels	-	-	○
Black headlight masks, satin chrome eyelid	●	●	●
Glossy black exterior door pillars	●	●	●
Tinted rear side windows (+rear window on Sport Tourer)	-	●	●
Metallic paint	○	○	○
INTERIOR APPEARANCE			
Aluminium inner sill on front doors	-	-	●
"Hot metal" dashboard decorative trim and inserts on door panels	●	●	-
"Glossy black" dashboard decorative trim and inserts on door panels	-	-	●
Dashboard with contrast stitching	-	-	●
Leather-covered gear lever knob	●	●	●
Sport-style front seats with reinforced lateral location	●	●	-
Grand confort ¹ front seats, with electric settings	-	-	●
Perforated leather / leather-type upholstery* (beige)	-	-	●
Perforated leather / leather-type upholstery* (dark grey)	-	○	○
Leather steering wheel*	●	-	-
Leather steering wheel* with flat section	-	●	●

● = standard ○ = option - = Not available

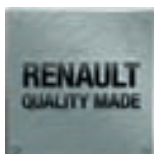
*Bovine source leather.

** Depending on availability. Please check with your local dealer.

RENAULT LAGUNA



(www.renault.ie) / (www.renault.tv/en)



The utmost has been done to ensure that the content of this publication is accurate and up-to-date when going to press. This document has been created on the basis of pilot lots and prototypes. As part of its ongoing product improvement policy, Renault reserves the right to modify the specifications, vehicles and accessories described and shown at any time. Such modifications are communicated to Renault dealers as quickly as possible. Depending on the country of sale, certain versions may differ and certain equipment may be unavailable (as standard, optional or accessory). Please contact your nearest dealer for the latest information. For printing reasons, the colours which appear in this document may differ slightly from the actual paint and the upholstery colours. All rights reserved. It is forbidden to reproduce in any format and by any means all or part of this publication without prior written authorisation from Renault.

